



Schindler 9500®  
Horizontal Moving Walks, Type 35  
Reliable solution for public transport





# Versatility on demand

You will find Schindler moving walks in some of the world's busiest airports, exhibition halls, subway systems and shopping complexes.

# Schindler 9500® Type 35

## High performance. Low operating costs.

Schindler 9500-35 is a high-performance moving walk engineered for the punishing environment of high-volume public transport, both indoors and outdoors. It is ideal for airports, railway stations and trade fairs. Smooth operation not only gives passengers a quiet, safe ride but it also fosters a long service life.

Extremely efficient drive technology can deliver significant energy savings.

### **Minimum installation space, maximum design options**

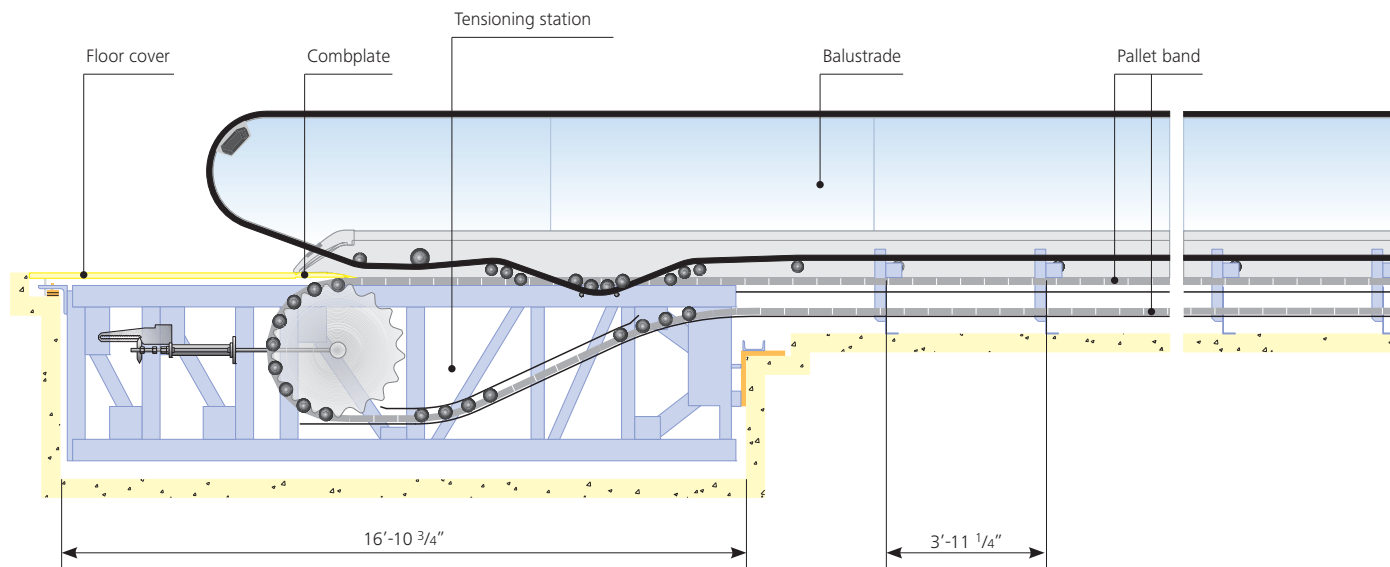
With the smallest pit depth in the industry and compact installation dimensions, Schindler 9500-35 is the front-runner in efficient use of space. This flexibility, along with a broad range of design options, makes it possible to integrate units into new or existing buildings as well as various outdoor settings. Design compatibility with Schindler escalators is a further asset.

### **Exceptionally economical**

Unique Schindler solutions and the use of smart technology guarantee maximum operational cost-effectiveness and ease of maintenance.

Highly efficient drive technology, with a choice of automatic operation or variable-speed drive (where permissible by code), provides significant energy savings.

# All according to plan

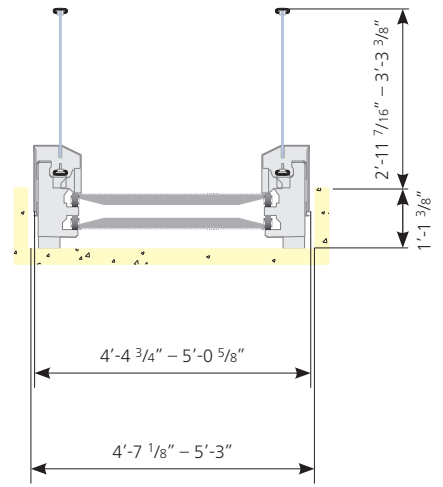
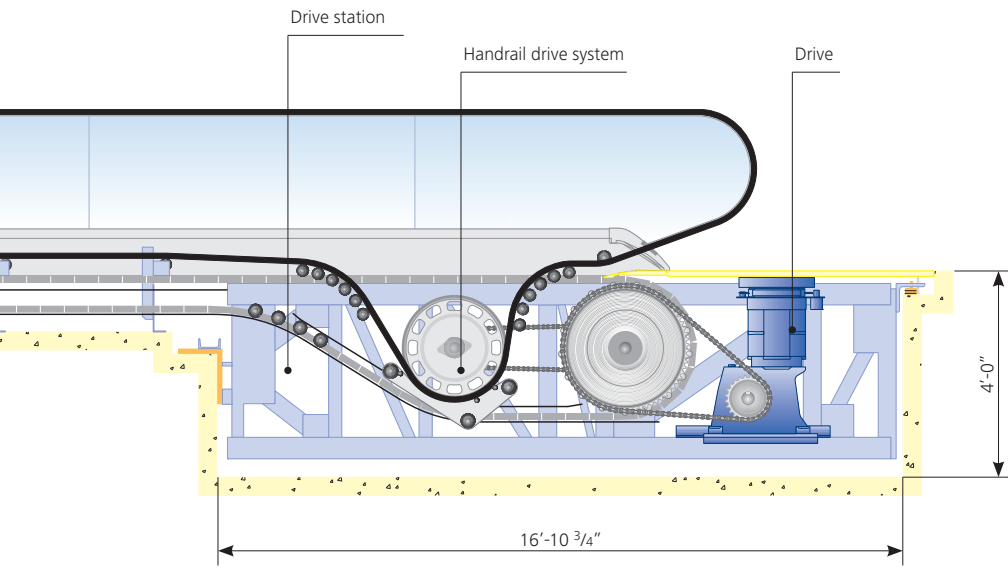


## Versatility on demand

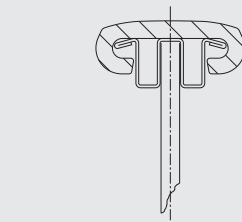
Schindler 9500 moving walks share the design versatility of Schindler escalators. There is a wide choice of materials, finishes, colors, sizes, lighting and other options that can be combined to produce customized solutions:

- inclination from 0 to 3 degrees
- pallet widths of 31 1/2" (800 mm) and 39 3/8" (1000 mm)
- balustrade heights of 35 7/16" (900 mm) and 39 3/8" (1000 mm)
- five balustrade glass color options or sandwich panels of brushed stainless steel or powder-coated sheet steel
- two balustrade design variants
- balustrade profiles and deckings in stainless steel or anodized aluminum
- a choice of stainless steel or ribbed aluminum floor covers
- options for installation indoors and outdoors, covered.

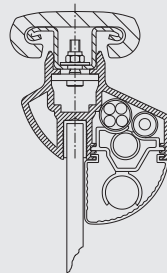




◀ Balustrade glass in a choice of colors



Design E balustrade — ▶  
a slim stainless steel profile ▶

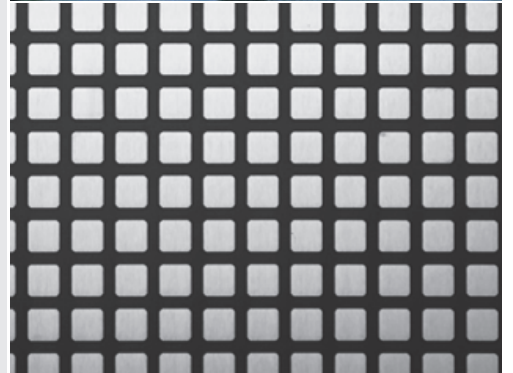


◀ Design F balustrade



◀ Aluminum floor cover with black anodized grooves

▶ Stainless steel floor cover with etched grid pattern ▶



# Fine-tuned technology

## Engineering excellence

Every Schindler 9500 moving walk is designed for quality and customer satisfaction. In fact, quality has always been at the top of the Schindler agenda, and it was Schindler that led the industry into the new era of ISO 9001 quality standards, becoming the first escalator and moving walk manufacturer to receive certification. In accordance with these standards, every Schindler 9500 moving walk is manufactured and tested in our Clinton, North Carolina facility, which was named as one of ten of Americas Best Plants® by *IndustryWeek* magazine.

## Efficient use of space

The 13<sup>3</sup>/<sub>8</sub>" pit depth in the center section is the smallest in the industry. This unique advantage keeps installation to a minimum and greatly simplifies integration into predefined settings.

## Maximum safety

Here, too, Schindler offers exclusive features: The pallet sides run under the skirting panels, eliminating the usual vertical side gap and thereby maximizing user safety with respect to pinching or wedging.

As with all Schindler models, the patented combplate design moves horizontally and vertically whenever pressure is applied by wedged objects, activating a contact that immediately shuts down the moving walk.

## Smooth operation for longer service life

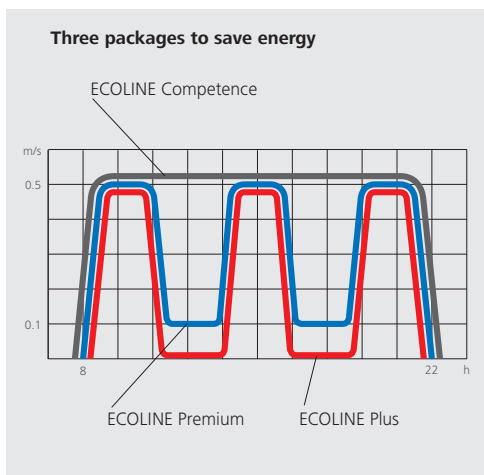
Because the short pallets are directly attached to the chain, there is no need for additional connection elements and pallet rollers. This results in quieter operation as well as in longer service life.

## Efficiency

With Schindler you have a choice of three optional energy-saving packages:

- ECOLINE Competence to generate energy savings of up to 20%
- ECOLINE Plus to provide stop-and-go operation
- ECOLINE Premium offering the advantages of crawling speed and peak current reduction thanks to a built-in frequency converter.\*

\* ECOLINE packages are available where permissible by code. Please contact your Schindler representative for more information.



# Reliable mobility

## **A winning team**

A network of product specialists, from engineers and project managers, provide personal attention and a high level of customer service at every step of the manufacture and installation of Schindler 9500 moving walks, helping to ensure that installation and handover are carried out in accordance with the project schedule.

## **At your service**

Schindler's support doesn't stop with the handover. Our proven reliability is clearly evident in our comprehensive network of maintenance and spare-parts supply. Regular professional manufacturer maintenance is available, no matter where units are located.

When sudden intervention is needed, Schindler-trained local maintenance teams can respond quickly. They can diagnose problems and take corrective action, so that passenger service can be resumed as soon as possible.

## **Remote monitoring and control**

To keep downtime to an absolute minimum, all units in a building can be supervised and controlled in real time by the optional Schindler LobbyVision® building management system or other types of remote monitoring. Operating parameters are monitored and recorded. Statistical reports facilitate the efficient management of all transport systems.

## **On-line accessible**

Visit our Web site at [www.us.schindler.com](http://www.us.schindler.com) to see the many unique ways Schindler is making it easier to do business with us. From automatic project drawing and specification programs to long-term project management and maintenance systems, Schindler's aim is to make your job hassle-free.



# Schindler

## Reliable, moving, trailblazing

For generations, Schindler has been providing the finest elevator and escalator technology to architects and builders around the world.

Founded in Switzerland in 1874, the Schindler Group has grown into a multinational company. Today, with more than 45,000 employees on six continents, we are doing business in more than 130 countries. Schindler Elevator Corporation, the North American subsidiary, employs over 6,500 people and operates in more than 250 locations across the U.S. and Canada.

For further information including location of the Schindler office nearest you, please visit:

**[www.us.schindler.com](http://www.us.schindler.com)**

U.S. Headquarters  
Schindler Elevator Corporation  
P.O. Box 1935  
Morristown, New Jersey 07962-1935  
Tel. 973.397.6500

Canada Headquarters  
Schindler Elevator Corporation  
40 Cowdray Court  
Scarborough, Ontario M1S 1A1  
Tel. 416.332.8280



Schindler prints with soy ink on recycled paper.